

# OPEN-OUT

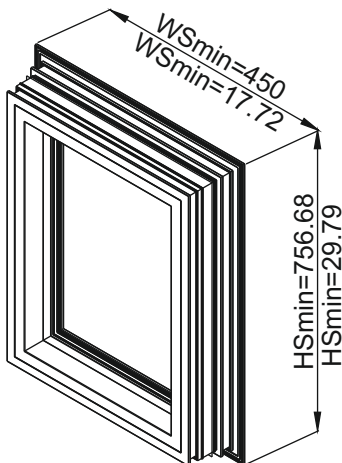
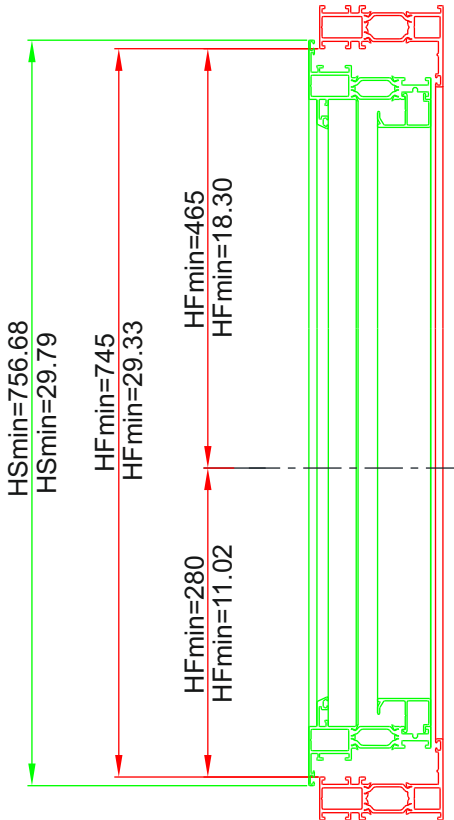
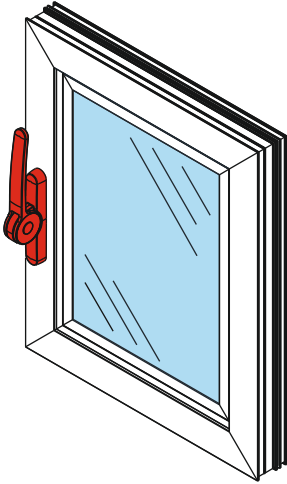
# Side-hung

W<sub>min</sub>. 450

W<sub>min</sub>. 17.72

H<sub>min</sub>. 756.68

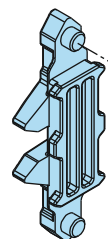
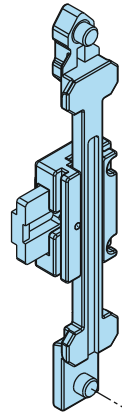
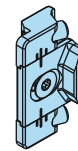
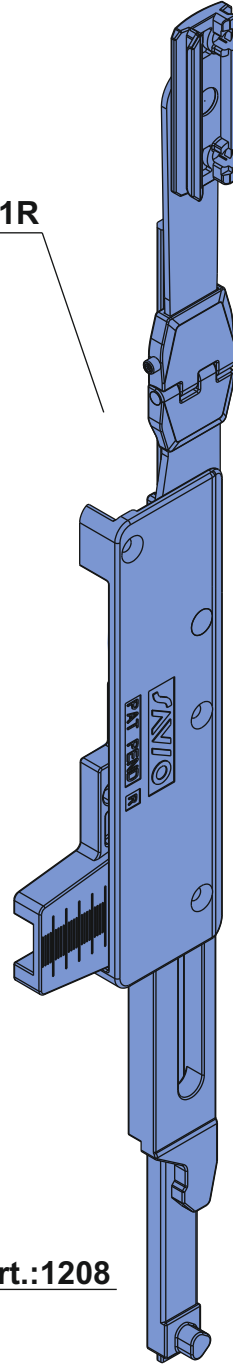
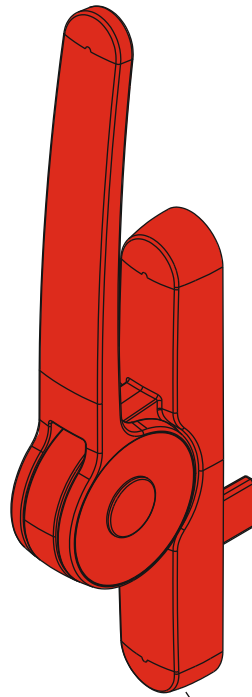
H<sub>min</sub>. 29.79



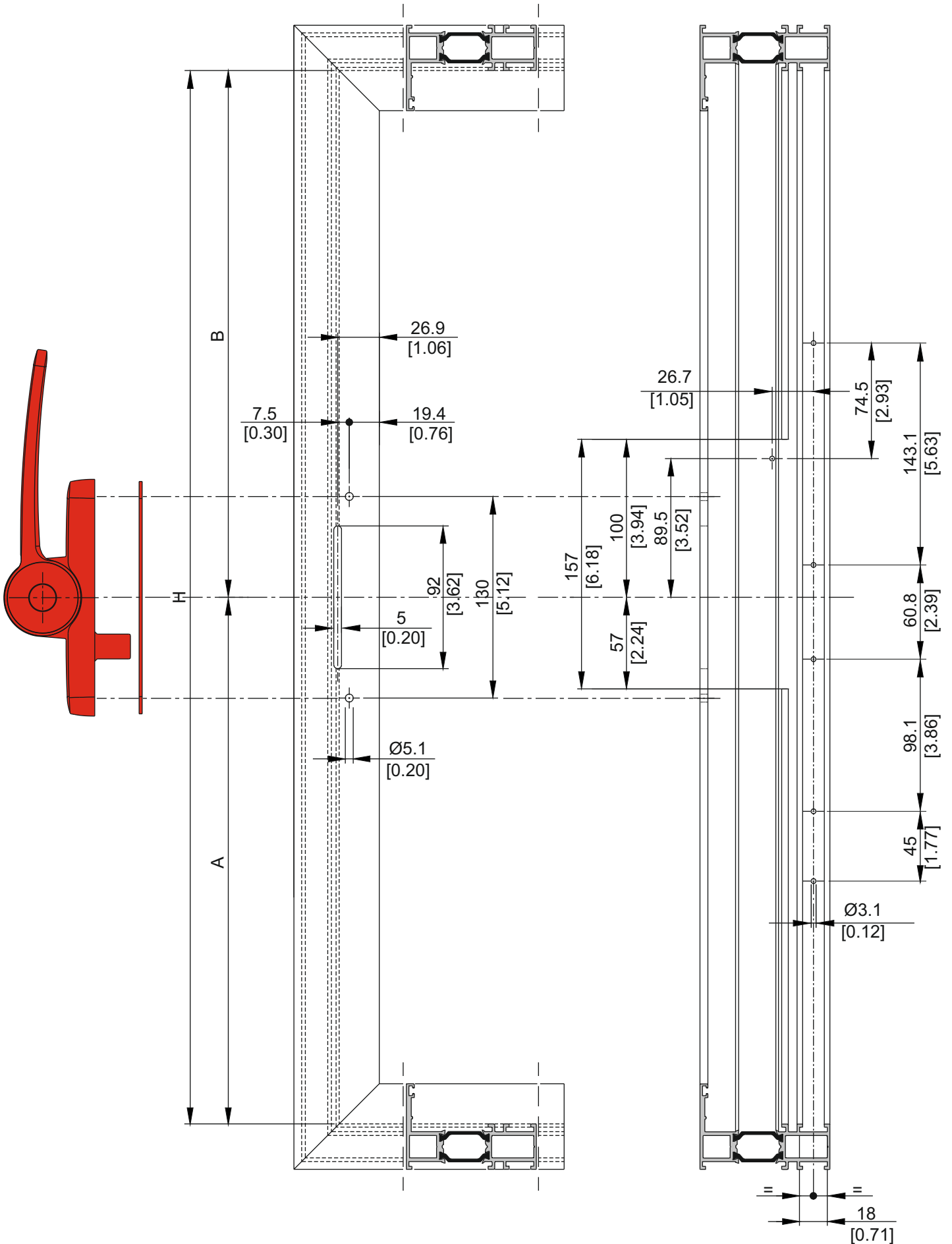
Art.:1208.710

Art.:1208.1R

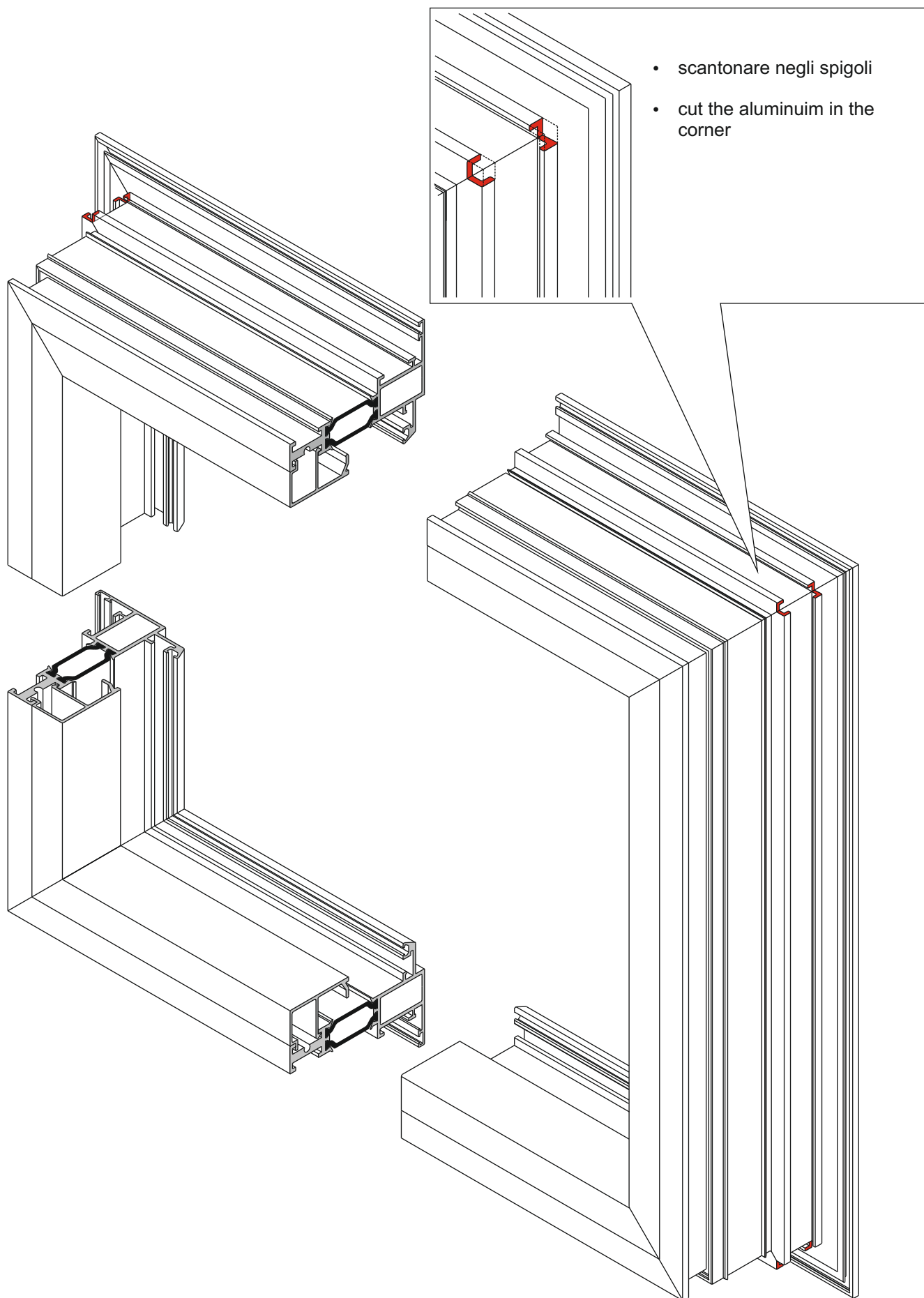
Art.:1208



## LAVORAZIONE TELAIO FRAME MACHINING

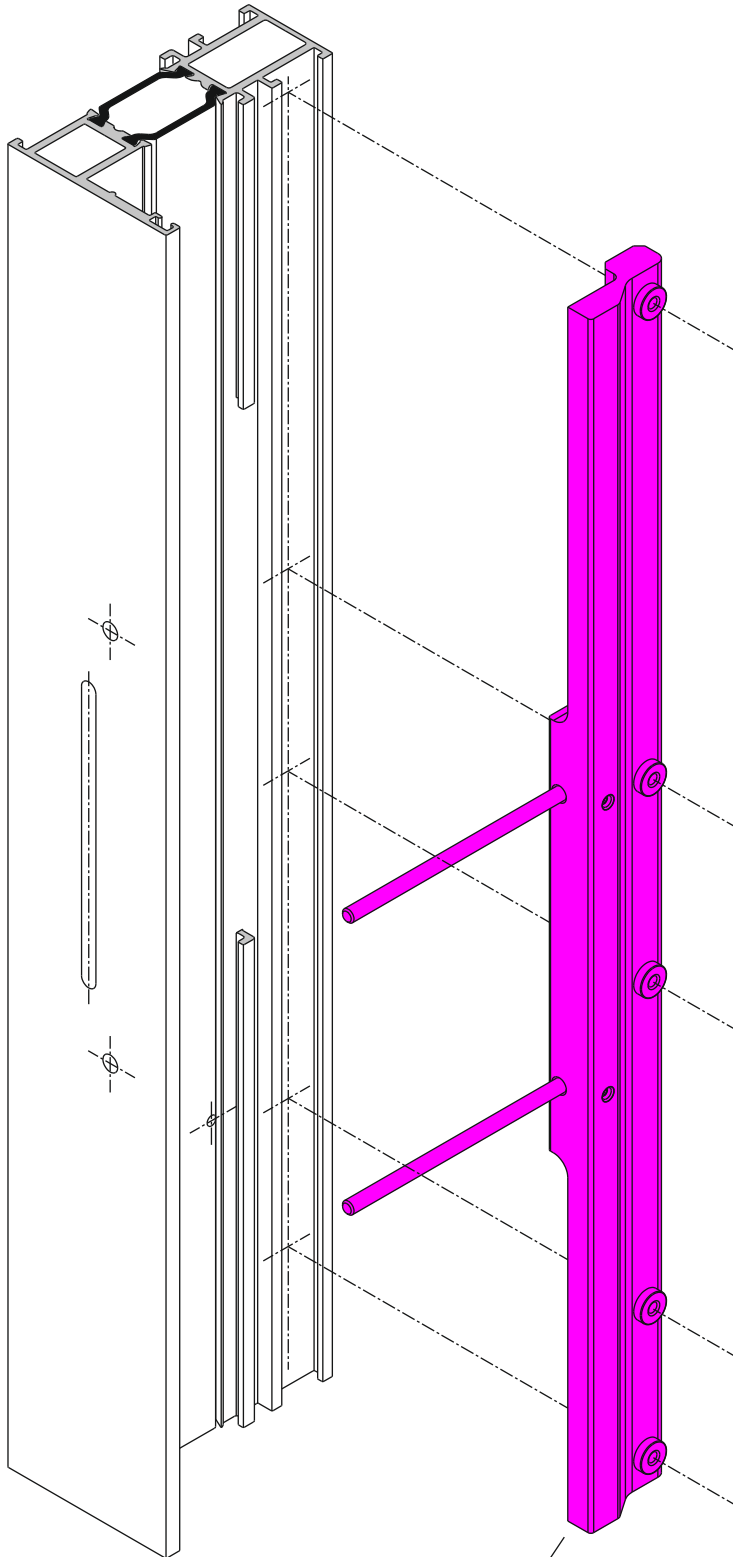


## LAVORAZIONE ANTA MOBILE MOVING LEAF MACHINING



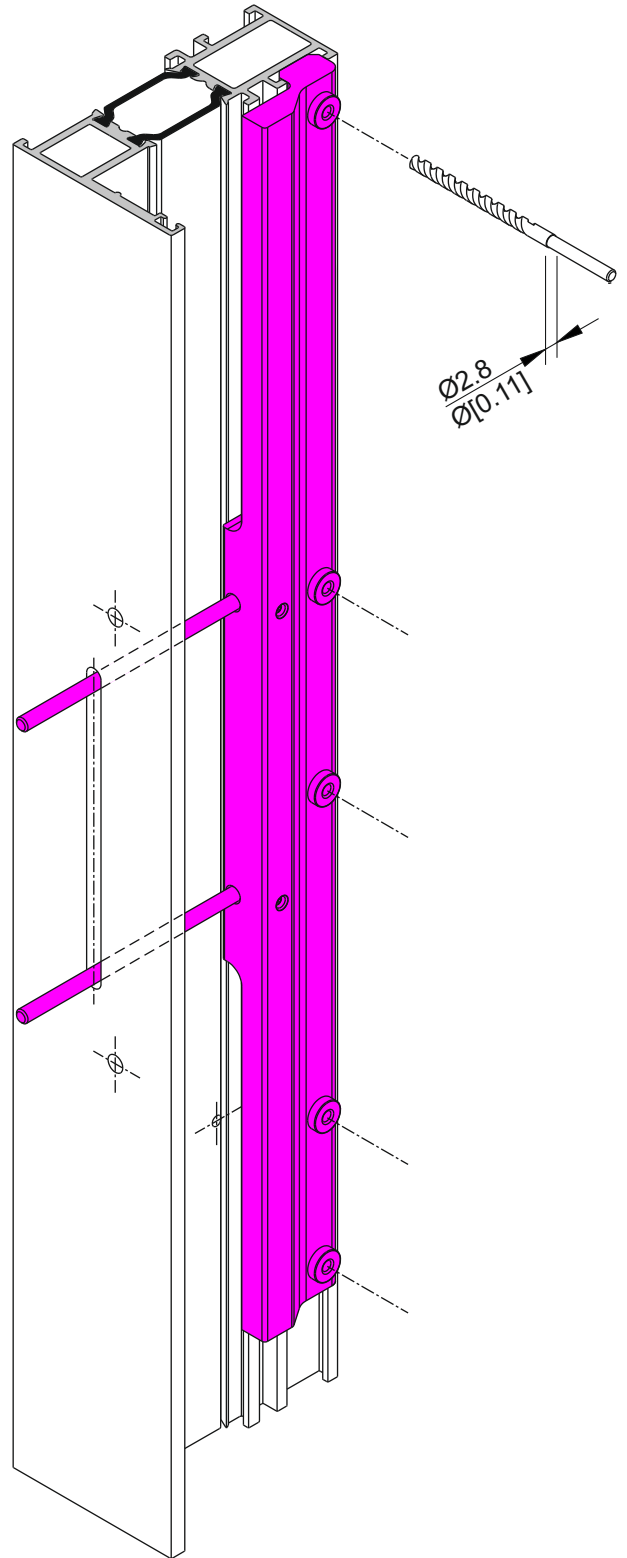
## DIMA DI FORATURA PER TELAIO DRILLING JIG FOR FIXED FRAME

I

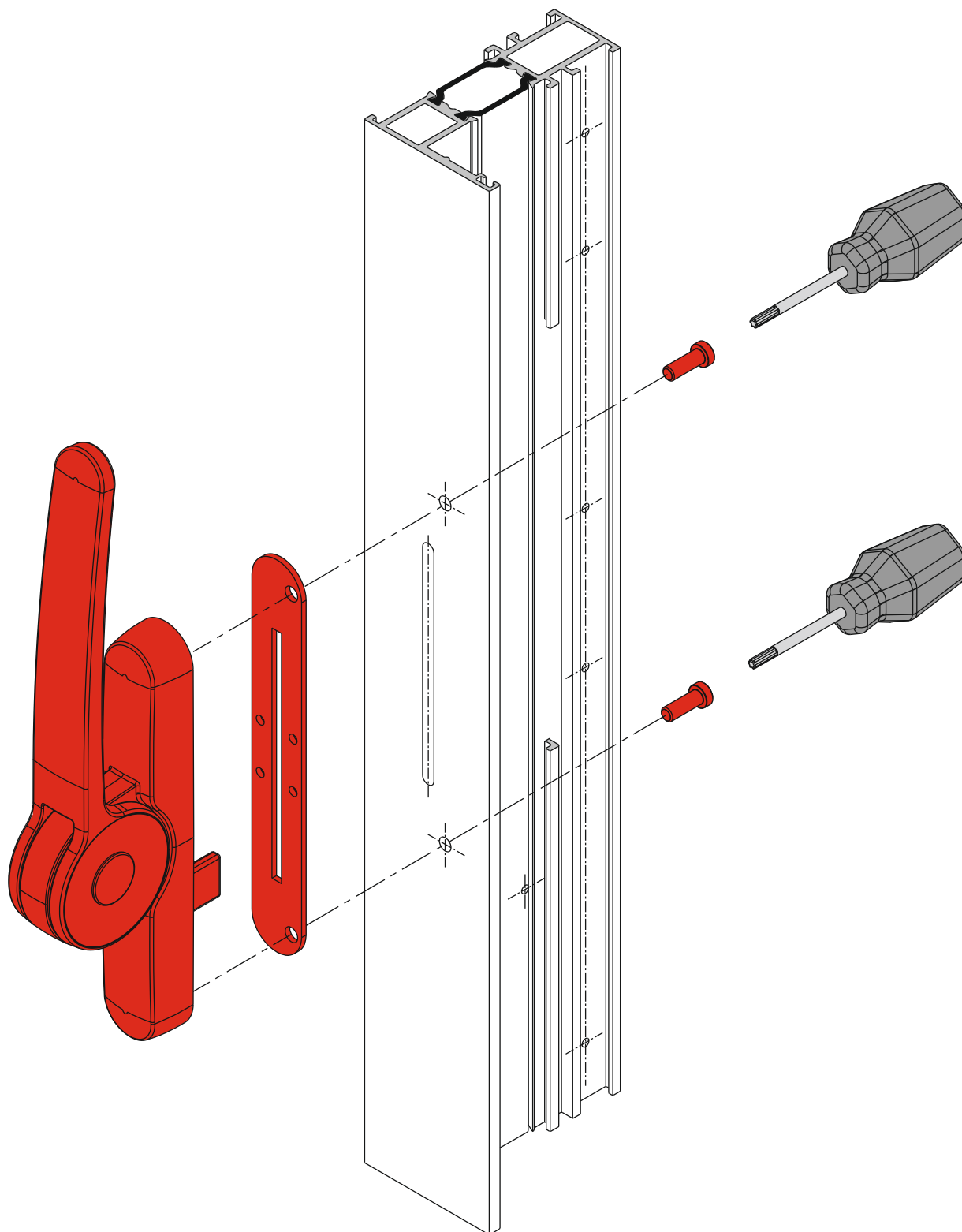


Art.:1208.950R

II

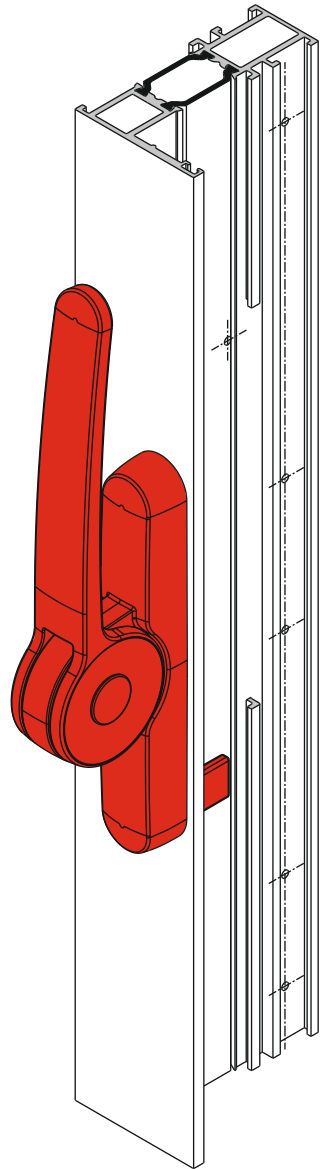


## MONTAGGIO CARIGLIONE HANDLE FITTING

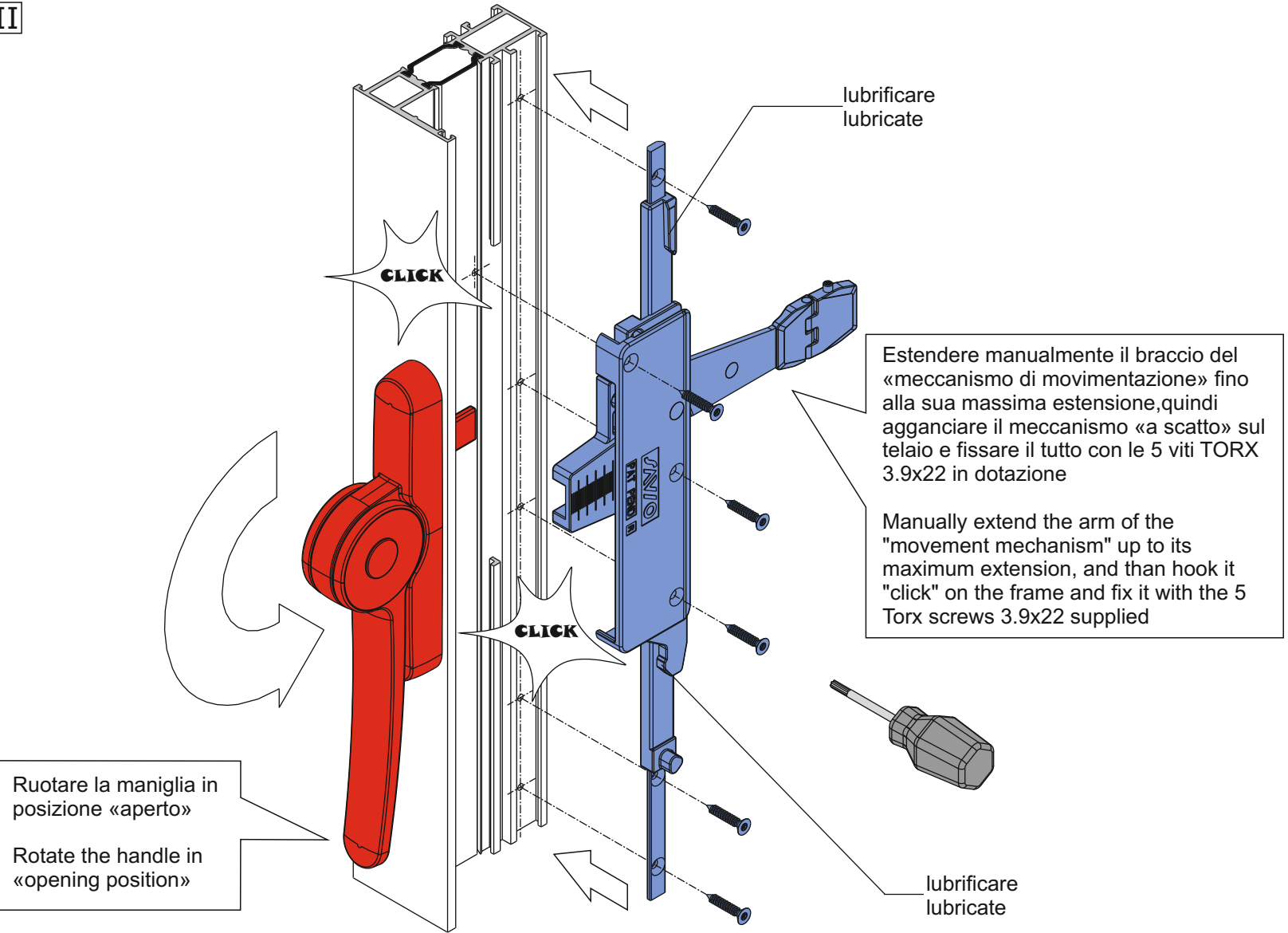


## MONTAGGIO MECCANISMO DI MOVIMENTAZIONE FITTING MOVEMENT MECHANISM

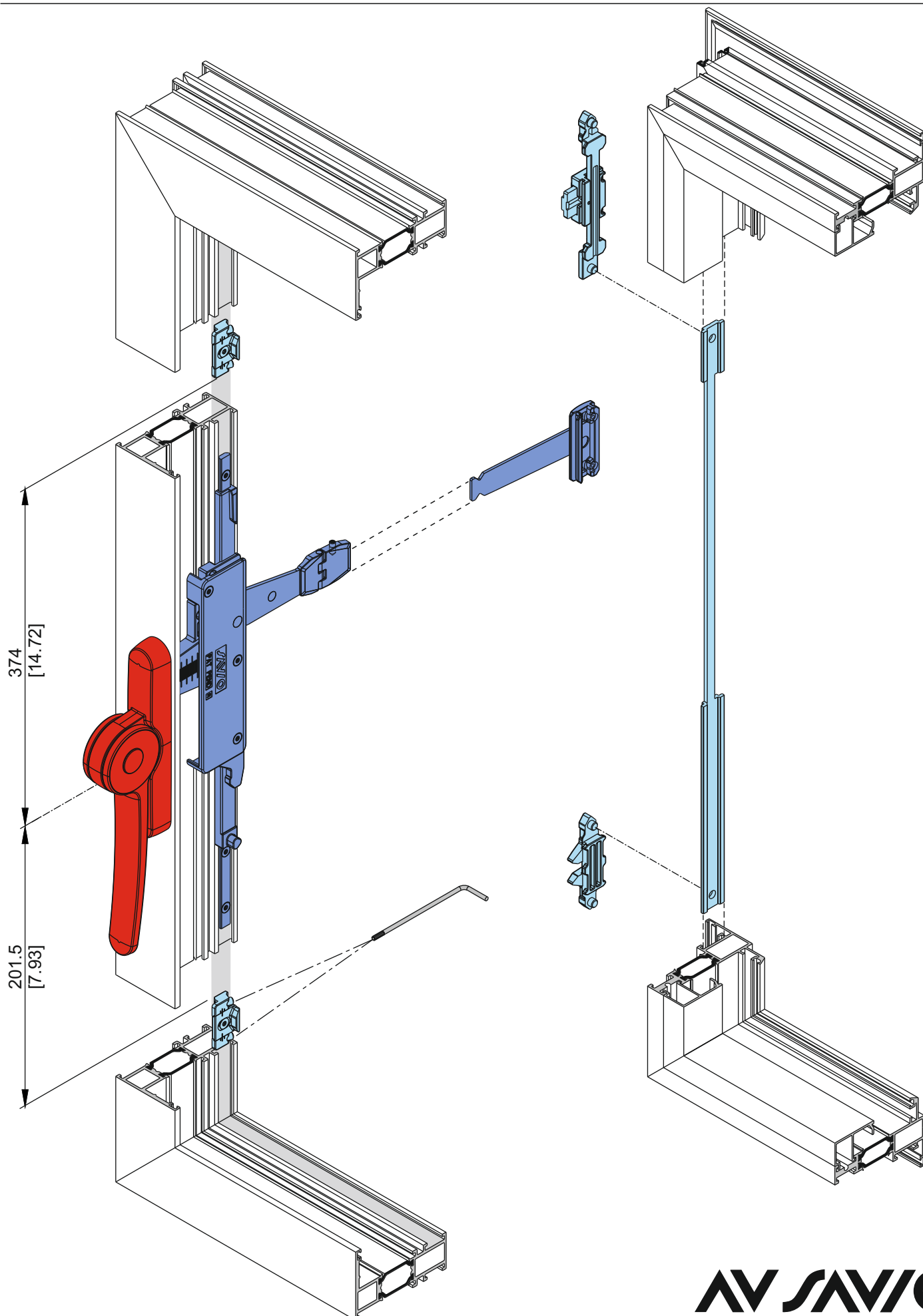
I



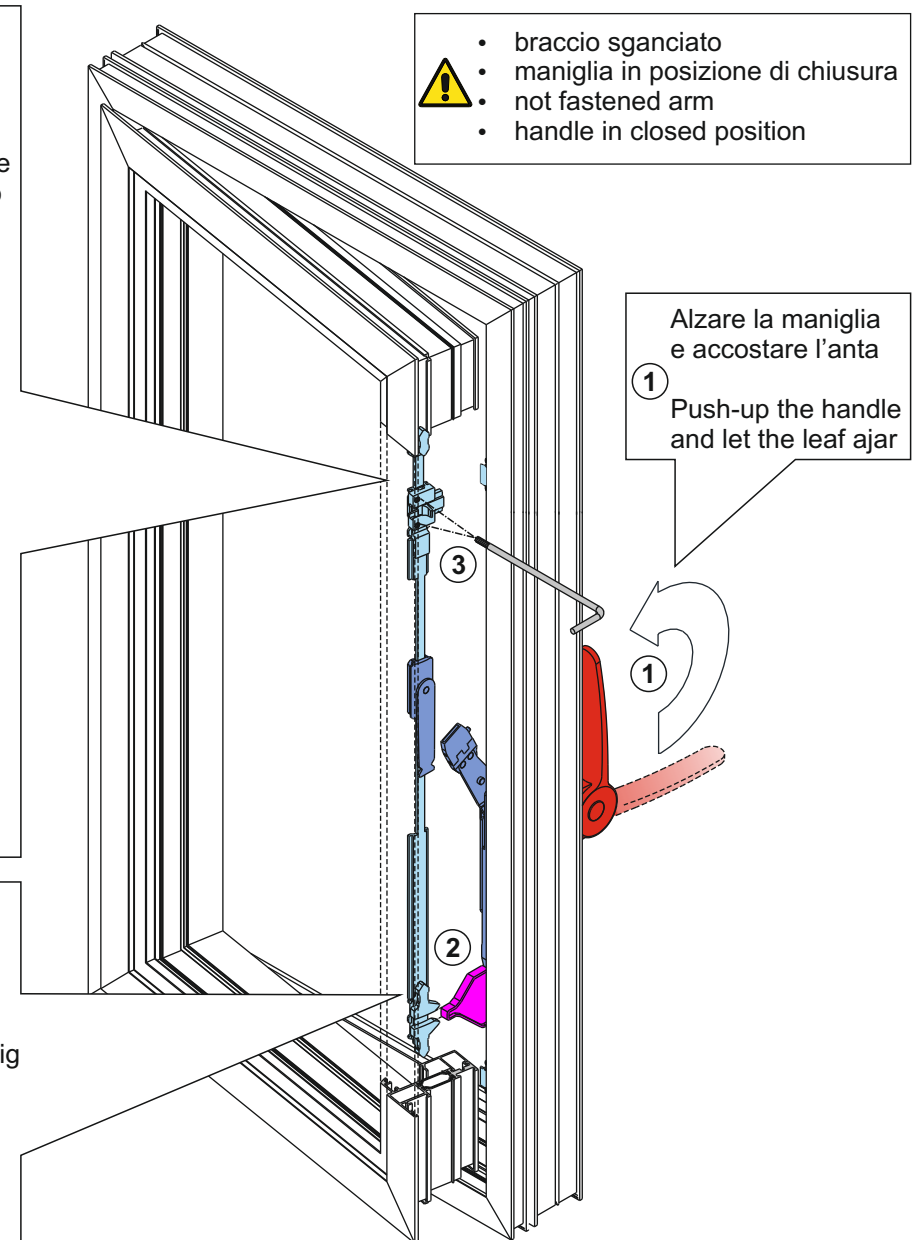
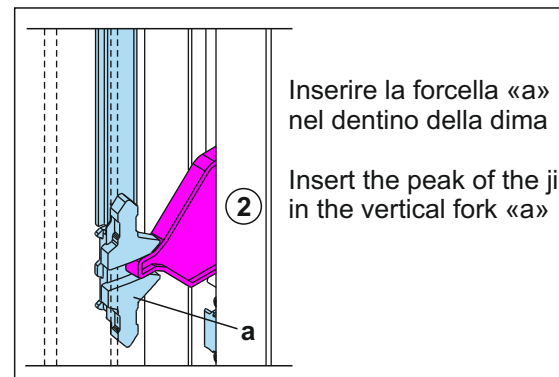
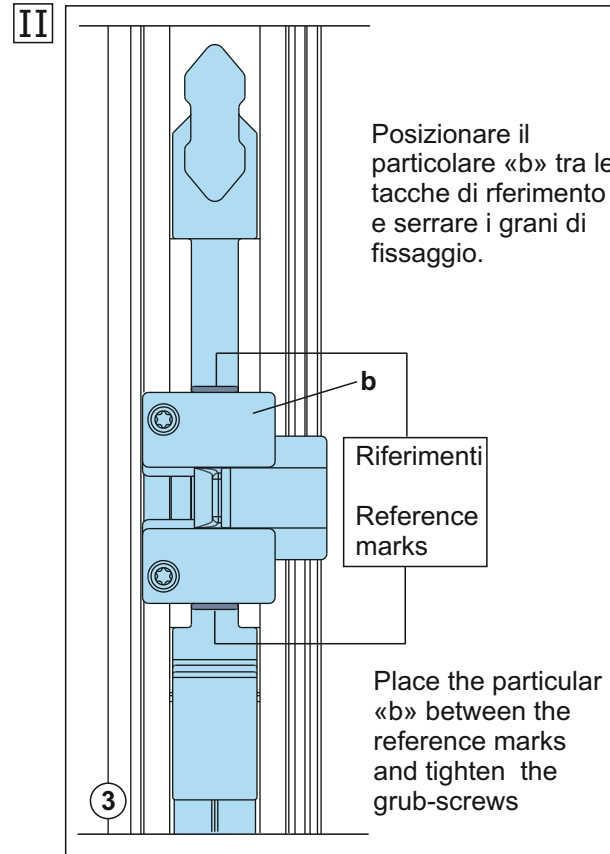
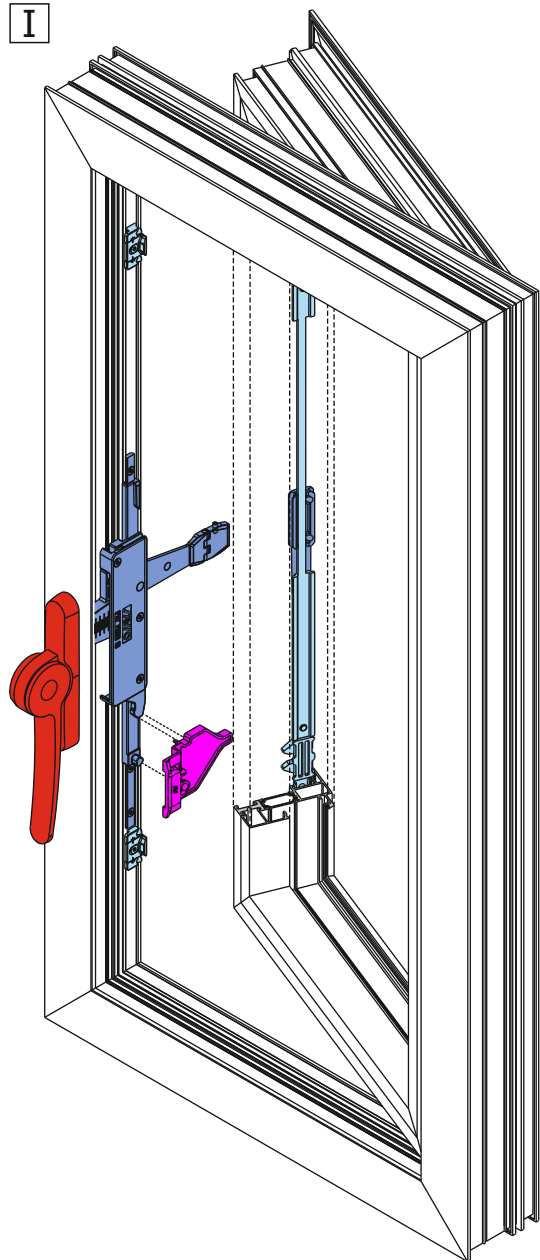
II



## POSIZIONAMENTO ACCESSORI SU ANTA ACCESSORIES POSITIONING ON SASH

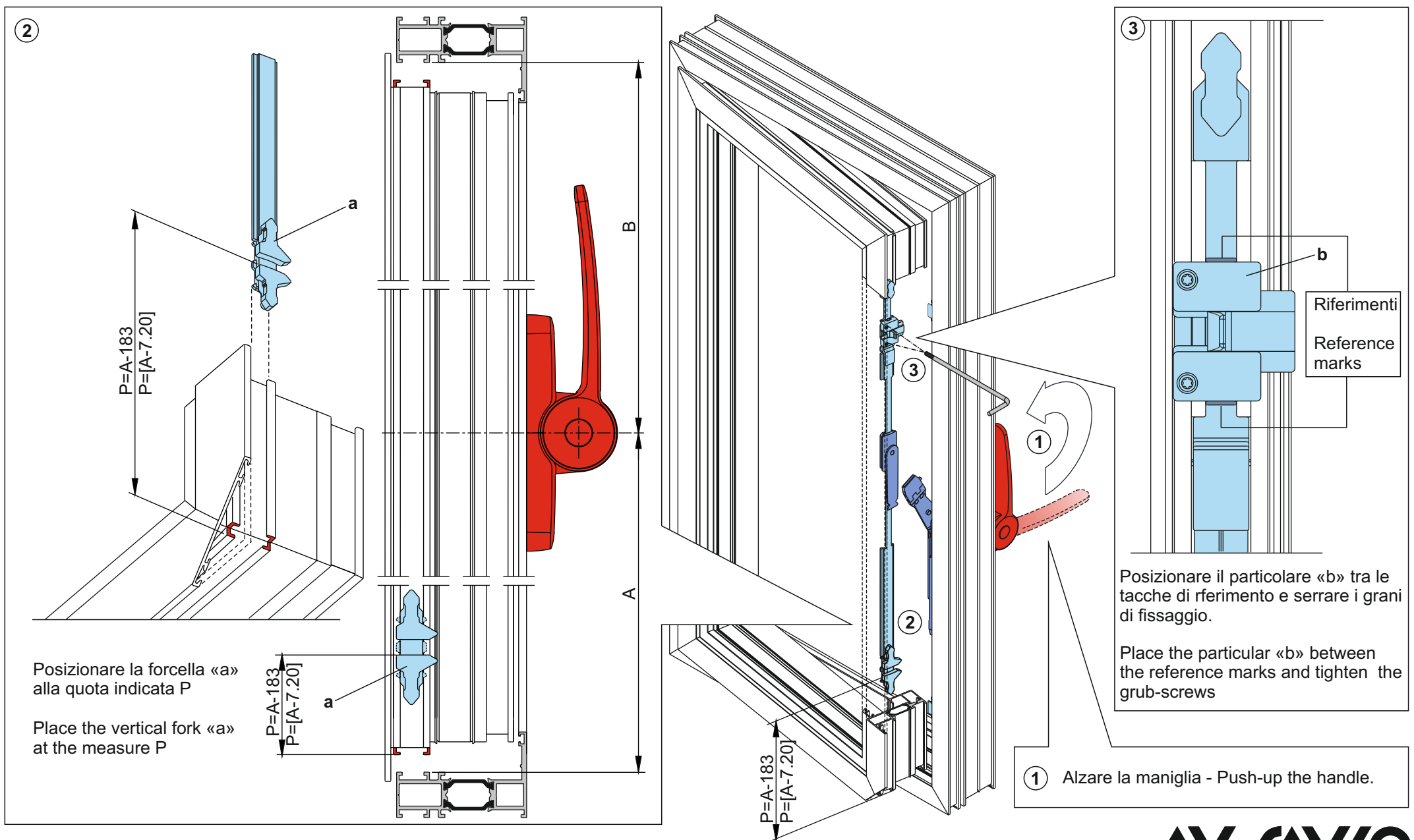


## DIMA DI POSIZIONAMENTO ACCESSORI SU ANTA MOBILE JIG FOR ACCESSORIES POSITIONING ON MOVING LEAF



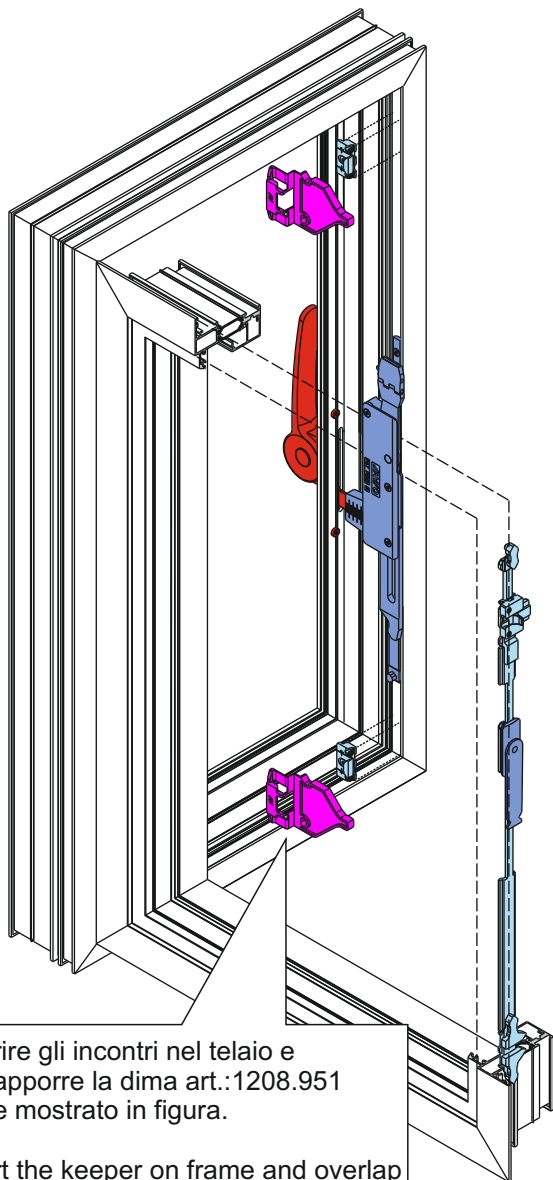


## POSIZIONAMENTO ACCESSORI SU ANTA MOBILE ACCESSORIES POSITIONING ON MOVING LEAF



## DIMA DI POSIZIONAMENTO ACCESSORI SU TELAIO FISSO JIG FOR ACCESSORIES POSITIONING ON FIXED FRAME

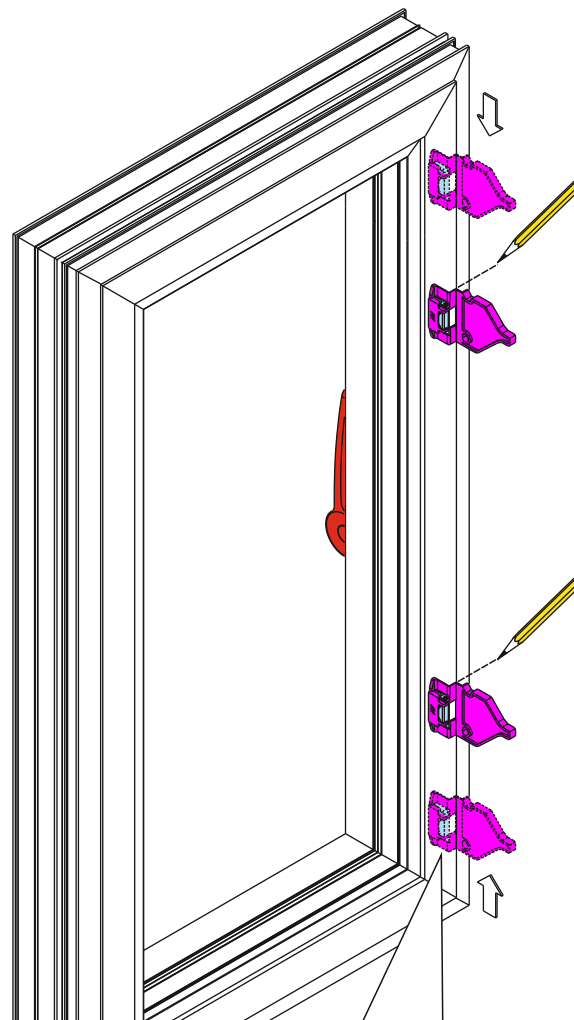
I



Inserire gli incontri nel telaio e sovrapporre la dima art.:1208.951 come mostrato in figura.

Insert the keeper on frame and overlap on it the jig item:1208.951 as shown

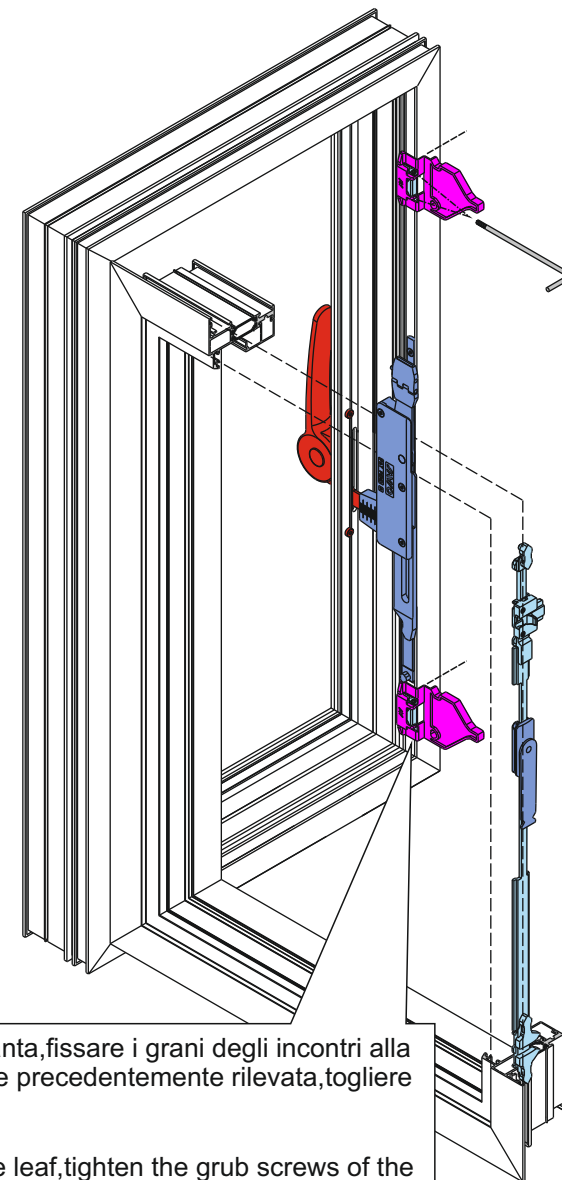
II



Chiudere l'anta , spostare la dima nel senso della freccia fino al suo fermo e segnare la posizione sul telaio.

Close the leaf and move the jig in the arrow direction until it stops  
Signs this position with a pencil on the frame.

III

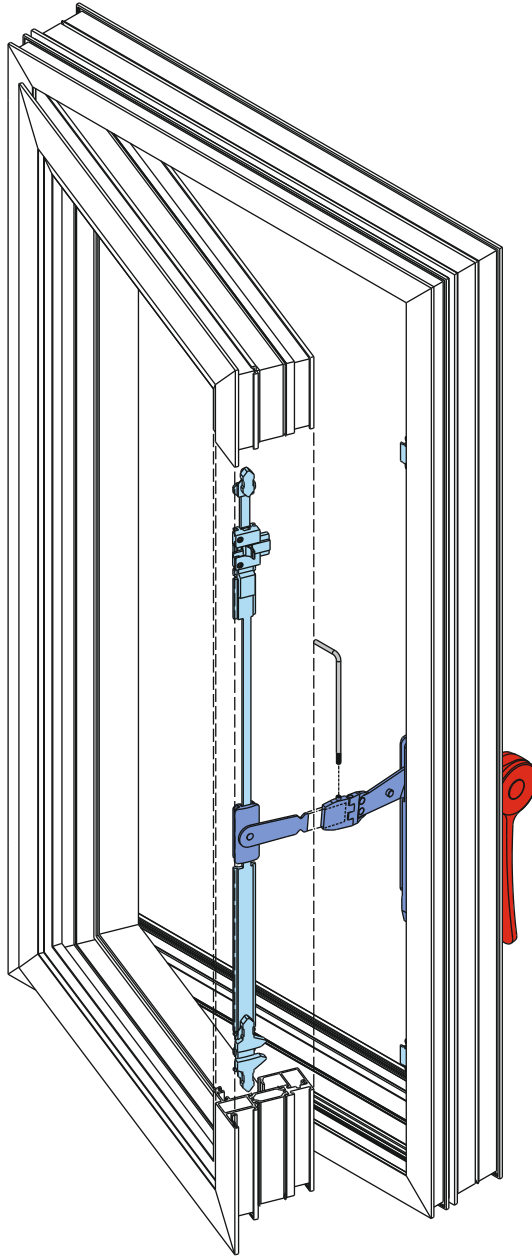


Aprire l'anta, fissare i grani degli incontri alla posizione precedentemente rilevata, togliere la dima.

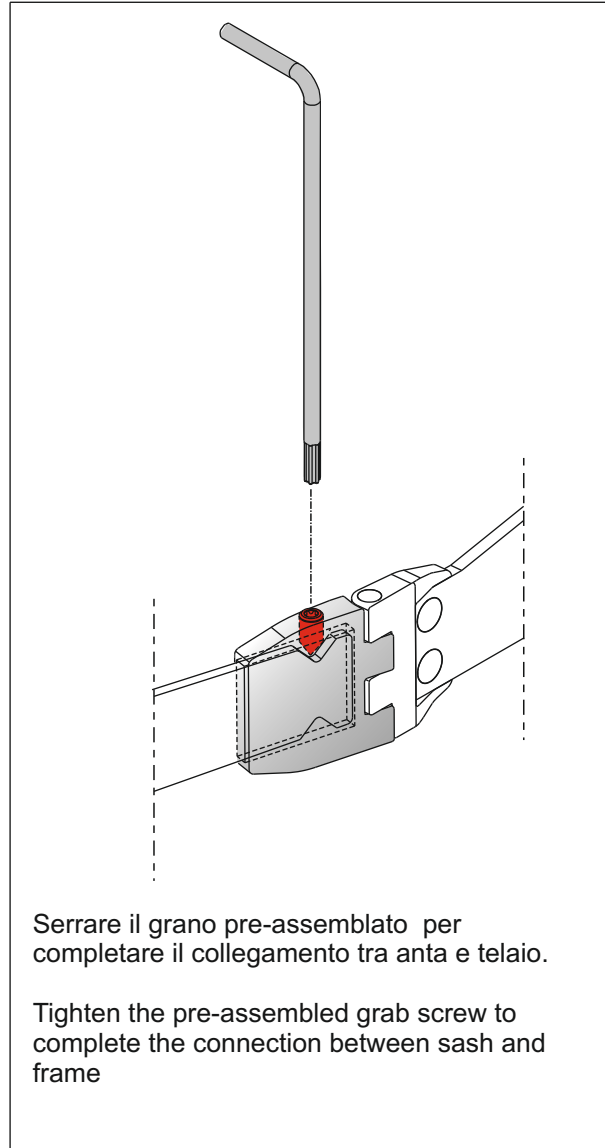
Open the leaf, tighten the grub screws of the keepers at the position drawn before, remove the jig

## COLLEGAMENTO ANTA-TELAIO FRAME-SASH JOIN

I



II



Serrare il grano pre-assemblato per  
completare il collegamento tra anta e telaio.

Tighten the pre-assembled grab screw to  
complete the connection between sash and  
frame

